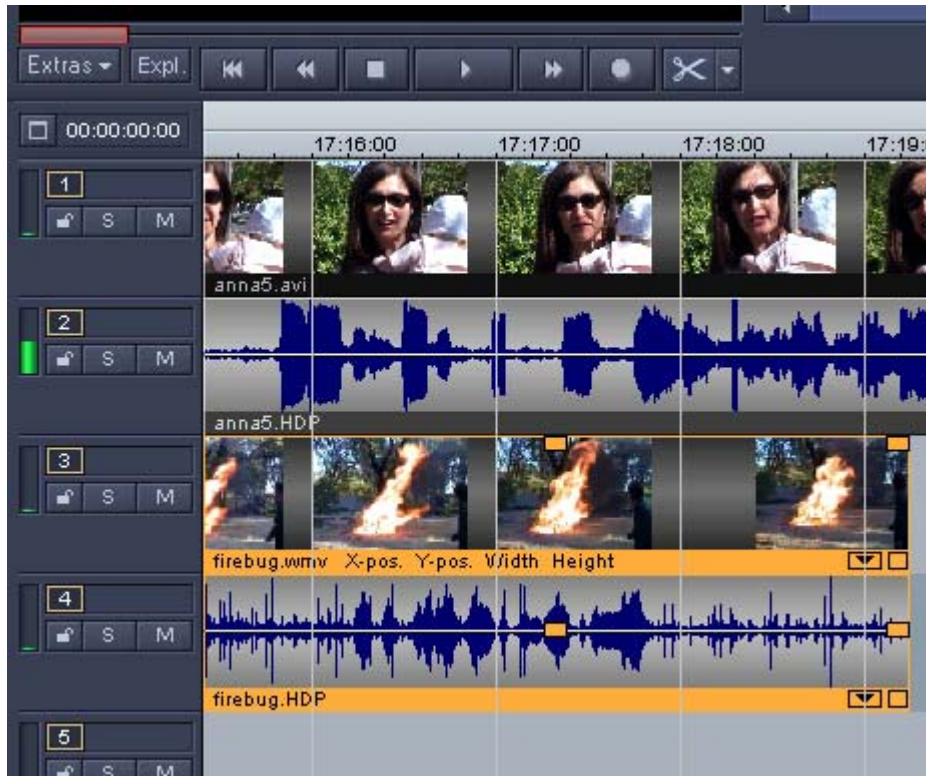


Picture In Picture Effect

MEP 2005/10 has a few presets for setting up picture-in-picture effects, but I find all of them too gimmicky for my liking, especially if all you want to do is to set up an accurately positioned static PinP. A manual setup allows you to wield far more creative control. There are a couple of ways of doing this. Firstly, use the Video Effects controls to reduce and position a video on top of another. Secondly, use the "Image Size and Position" right click dialog (or "Num Edit" button) to access more advanced PnP options such as cropping.

All basic PnPs require the following basic setup:



1. Put the foreground video on a lower track on the timeline eg the background video goes on track 1, the foreground video goes on track 3 (MEP looks "up" through the timeline to produce the final video).

In this example, firebug.wmv is the foreground video and anna5.avi is the background video (it will sit behind firebug.wmv).

Picture In Picture Effect



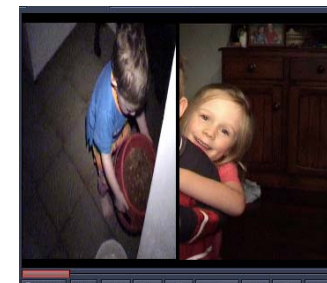
2. Right click on the foreground video (eg that is the one on the lower track, in this case track 3), and select Video Effects.
3. In the Mode section, click on the Stamp button.
4. In the Zoom section, click on Link (if you want to shrink your foreground video in proportion), then click on the “-” and “+” signs as required.
5. In the Preview window above the Zoom section, left drag (ie left click and hold whilst dragging) the foreground video around with the mouse to position it.

That’s it! Click OK and you have a Picture In Picture.

For more accurate sizing and positioning of the PinP, click Num. Edit in the POSITION area of the video controller.

Alternatively, right click on the lower track and then click Image Size and Position....

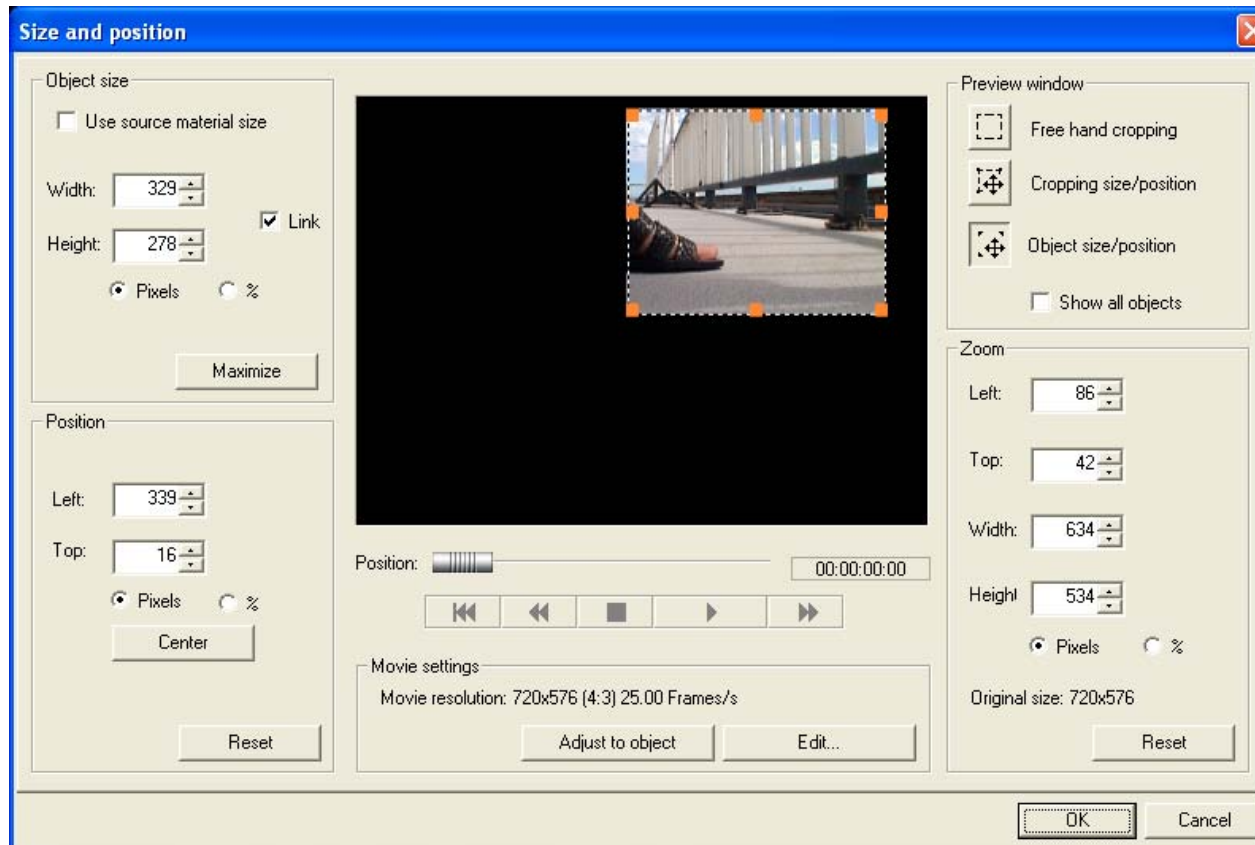
From Scenestealer: Using the Preview Window settings, you can control both the size and position of the bottom and top tracks using the Image Size and Position function. It is quite easy to set up a dual-picture display like this:



Picture In Picture Effect

For example, you can remove the slight black horizontal borders of your small picture by cropping it very slightly using the “Cropping Size and Position” button and then dragging the sizing handles.

This is the dialog displayed if you click Num Edit on the Video Controller, or “Image Size and Position” in the right-click menu.



Use the Zoom Object Effect curve on the lower object and you can zoom it in and back out with ease.